

WEB & APP

ONLINE & MOBILE SOLUTIONS

texPortal and texApps System requirements



In this document you will find the system requirements for the online solution texPortal and the app solutions in version 2024.1.

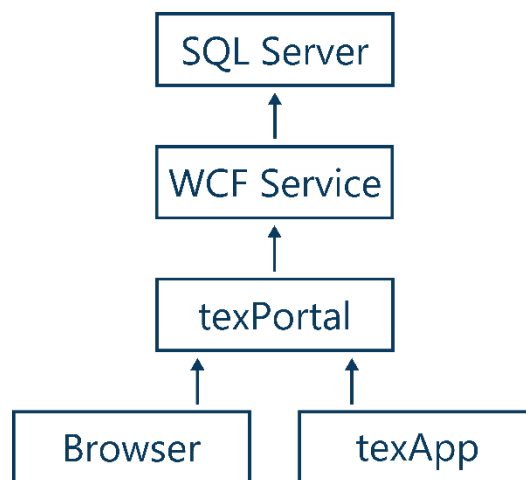
The texPortal is the basis for many modules and application areas. It is the basic requirement for the use of additional apps. In order to be able to optimally use the texPortal ordering and inventory on mobile devices - including tablets - we also recommend the texOrder app.

The texPortal is not optimised for mobile devices.

The apps texScan and texUniScan can also be used without texPortal; however, in this case, neither an external nor internal barcode or RFID scanner that provides data via broadcast can be used. The configuration for this is only possible in texPortal.

General

The communication between the individual components runs as follows:



*The arrows represent requests answered via the same return channel.

The texPortal is a Linux-based communication server.

If you need technical support for Linux, we can recommend a cooperation with the IT service provider [Computer Manufaktur GmbH](#).

The installation of the WCF can be done centrally on the SQL server or decentralised on another server.

It is important that the communication below is guaranteed:

- The texPortal must be able to communicate with the WCF via HTTP, likewise the WCF must be able to reach the SQL server (TCP port 1433).
For externally hosted portals, HTTPS encryption of the WCF service is mandatory, as the WCF must be externally accessible for the portal. As an alternative, we recommend securing the connection via VPN. For internal hosting, HTTPS encryption is recommended.
- The texPortal must be accessible from the internet.

HTTPS encryption

texPortal workwear and texPortal residential laundry work with personal data and transfer them between the browser and texPortal (internet transfer). Therefore, the DSGVO must be considered here. Although the use of an encrypted transfer (HTTPS) is not formally anchored in the DSGVO 2018, it is indirectly assumed (source: <https://www.security-insider.de/webmaster-in-der-https-pflicht-a-713993/> (status 28.09.2020)). We therefore recommend to generally set up HTTPS encryption for accessing the texPortal.

Please contact your IT support for a suitable certificate. You can create a trustworthy certificate via "Let's Encrypt" or order one from a certificate authority on your domain.

Backup

In the portal, an existing or sensible path must be entered under Administration → System settings → Data options → Backup to have daily database backups created automatically.

For further details or to store the backup on another server, please contact your system administrator.

Note: This backup does not include the operating system!

WCF service**Licences**

We need a server from you on which we can install the WCF service.

Please note that the licence key of the WCF component is composed, among other things, of various information of the hardware of your server.

As soon as a hardware component on your server changes due to unauthorised copying of the licence or due to hardware changes to the computer name, BIOS serial number, serial number of the first volume or MAC address of the first network adapter, the licence of the WCF service is also blocked and logging on to the app is no longer possible. We therefore ask you to contact our support team whenever you make changes to your system. We can then renew the licence in a timely manner.

WCF requirements

- CPU: Min. 2GHz, at least 2 cores
- RAM: 8 GB
- SSD: 120GB
- Network: Min. 1 Gbit
- Windows Server 2016 or higher (recommended: Windows Server 2022)
- IIS version 7 or higher (To set up the server configuration, we need administrator rights or the right to configure websites via Internet Information Services Manager.)
- .NET-Framework 4.0
- Web Deploy components for IIS (we will install these if required)
- WCF components for .NET-Framework (we will install these if required)
- HTTP authentication components for .NET Framework (we will install these if required)
- Connection to the database server with the TIKOS DB (access to the SQL server instance of the TIKOS database (Named Pipes or TCP port 1433), in the case of a known SQL instance correspondingly different).
- Connection to the directory of the shared TIKOS files (read and write access to the share of the shared files (socom\$))
 - Note: This must be possible for the user of the ApplicationPool.
- WCF service must be permanently active so that the texPortal can communicate with the TIKOS database.

TIKOS

If you want to use texPortal version 2024.1 in connection with TIKOS, TIKOS version 2024.1. is also required.

System requirements texPortal

The portal runs on Linux under Debian 12. From Version 2024.1, it can also be operated as a system consisting of several Docker containers.

The following basic installation must be provided for this. Instructions for the installation of Debian can be obtained from your key account who oversees your project.

- Processor: at least 4 cores, recommended 6 cores
- RAM: at least 8 GB RAM, recommended 16 GB
- Hard drive: 250 GB available memory, recommended: SSD
- Operating system: Debian 12
- always the newest version with security updates
- HTTPS certificate (recommended for texPortal order and inventory, for texPortal workwear and residential laundry a requirement)
- Port 443 for SSL encryption or port 80 for unencrypted connection must be forwarded to the portal server.
Note: The forwarding can be done from any external port, so you could also forward e.g. port 8888 to port 443. Please note the configuration settings in your firewall. The portal server must be allowed to establish unlimited connections to the Internet for licensing and update purposes. The firewall(s) / routing in the LAN must therefore be configured accordingly.
- The portal server must have HTTP access to the WCF service.
- A current up-to-date browser such as Chrome, Firefox or Edge must be used for operation.
Note: Please set the time zone to your region when installing the Linux server. This setting also needs to be transferred to /etc/php.ini.
- If the server is virtualized, the MAC address of the virtual network card used to access the network must be assigned as "static". Otherwise, the configuration of the network interface on the server may be lost as the virtual network card is recognised as new hardware.

We need a user which can access the server via SSH for base installation, maintenance and support. This user must be root or a separate user with "sudo" rights.

Basic browser requirements

These browsers are supported in their latest stable version:

- Edge:
- Firefox:
- Chrome

Display resolution

The display resolution should be set to a minimum of 1.280 pixels in width, an optimum graphic representation is guaranteed from 1.800 pixels on.

System requirements texApps

General

Currently, Android versions 5 - 12 are supported for all apps.

In addition, current Google libraries (i.e. Google Maps, Google Play Store, etc.) should be available.

Licenses

In order to be able to generate the licence information for the app, the WCF requires the following information from the WMI object of the IIS server:

1. Serial number of the BIOS
2. Serial number of the first hard disk

If this information is not available (e.g. by using a virtualisation software like BOCHS which does not support this information), no licence for the app can be imported.

texRoute App

- Internet access via WLAN or SIM card (with data tariff)
- Display resolution at least 1280x720 at 300 dpi
- If applicable, touch pen for the customer's signature
- Navigation app supported by your device (e.g. Google Maps)

texOrder App

- Internet access via WLAN or SIM card (with data tariff)
- Display resolution at least 1280x720 at 300 dpi

texScan App

- UHF reader (TSL 1128) connected to the smartphone
- Display resolution at least 1280x720 at 300 dpi

For the texScan app, it is advisable to transfer the data via WLAN due to the larger amount of data. The smaller the scans are kept, the faster the data is transmitted.

texUniScan App

- Internet access via WLAN or SIM card (with data tariff)
- Display resolution at least 1280x720 at 300 dpi

texEasyPick App

- Internet access via WLAN or SIM card (with data tariff)
- Display resolution (width depending on desired orientation portrait or landscape)
 - 600px – 120 dpi
 - 800px – 160dpi
 - 1200px – 240dpi
 - 1600px – 320dpi
 - 2400px – 480dpi
 - 3200px – 640dpi

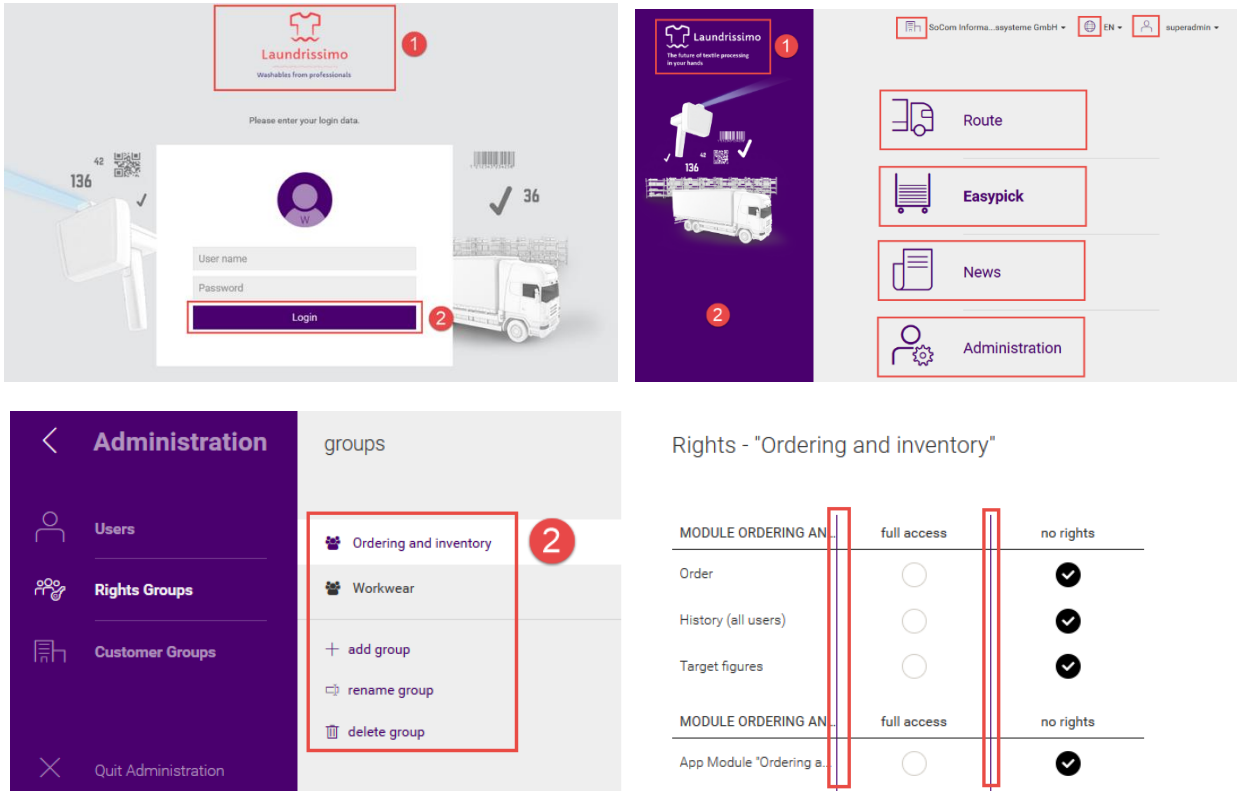
This specifications assume that the default values for display size and font size are set.

The texEasyPick app has been optimised for tablets and is only conditionally executable on a smartphone.

Note: **External scanners** can be connected via Android broadcast (except texOrder).
Further information is available on request. Please contact us.

Customers' own branding in texPortal

To visually adapt texPortal to your design, you have the option of displaying your logo on the start page and in the menu bar (1) and to select a background colour for the menu bar which is also the primary colour of the icons in the options bar at the top right and other navigation and button elements (2).



If branding is desired, we need further information and files from you. Please refer to the document "Questions in advance", which you will receive from your key account.

Attention! Only one branding can be carried out per texPortal.