



# TIKOS dust control mats

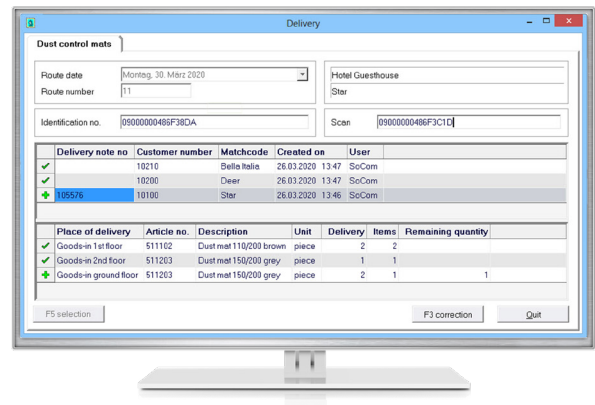
## The module for automated exchange

This module handles the automated change and calculation of dust control mats. For the individual customer, the stocks of the individual articles are defined separately according to colours and sizes. For the billing, **flat-rate prices** as well as **prices dependent on the change rhythm** can be defined. In the case of billing by change, these prices can be stored according to the change frequency. Rental prices (e.g. rental price per item and week) can also be calculated. In the case of flat-rate billing, a distinction can be made between advance or subsequent billing.

## Delivery location and exchange quantity

**Different delivery locations** can be stored for each customer. If the customer wants a different delivery quantity in summer than in winter, this can be easily defined in the route management using **different change rhythms** for certain periods. For each combination, the dust control mats can then be recorded with delivery location and change quantity. Upcoming changes (e.g. the customer wants one more mat on a certain day) can also be noted in TIKOS at an early stage.

**Individually tracked** dust control mats can be **scanned** for the route to ensure for example that they are loaded into the truck **in the correct order**. If an item was scanned in the wrong order or if the delivery quantity is not complete, the system automatically issues a corresponding message. If the route documents (route list and/or delivery notes) are printed or transferred to our texRoute app, the change quantities and any stock corrections are automatically saved. Depending on the change rhythm, the price from the master data is used accordingly. This data is then automatically available for invoicing without further processing.



## Advantages

- Seasonal contracts (e.g. every other week in summer, weekly in winter)
- Different delivery locations (distribution points) for each customer
- Automatic order generation
- Automatic printing of delivery notes and immediate invoices
- Prices dependent on exchange frequency or flat-rate rental calculation
- Advance and subsequent accounting
- Automatic changes of stock values
- Stock value and dispatch quantity list
- Scanning for correct sequence of truck loading