



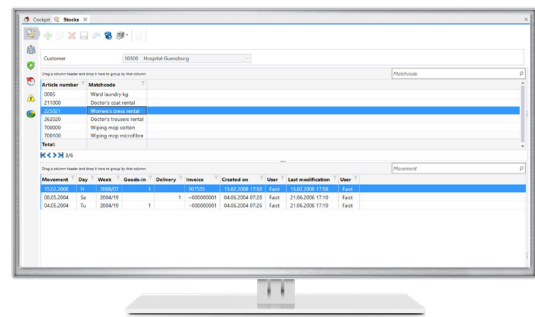
# TIKOS rental flatwork

## The module for complete recording

Keep track of delivered and returned items with our rental flatwork module. **Complete recording and tracking** of all items provides **insight into the current delivery status** of your customers at any time.

### Stock determination

The stock at the customer can be determined by recording at goods-in and at goods-out. Quantities counted in the soiled laundry area can be recorded directly at goods-in or entered later with the delivery quantity. A target stock can be stored for each customer and article, whereby the corresponding **delivery quantities are automatically suggested**, checked and, if necessary, adjusted as soon as an inventory of the customer is available. In the event that an incoming count is not desired, equipment quantities can be stored for the customer. In the event of a change in the equipment quantity, automated booking via a reservation/reduction is possible directly within the scope of the regular delivery.



### Standard delivery quantities or customised delivery quantities

In the course of **intelligent management of delivery quantities**, standard delivery quantities can be entered for the corresponding delivery days, which are **automatically suggested when entering the delivery notes**. At the same time, your customer has the option of ordering directly, e.g. by telephone or via our texPortal order and inventory. These orders are then specified accordingly as delivery quantities. All articles can be delivered in a **wide variety of packaging units**, whereby the program automatically adjusts the corresponding delivery quantities. With the help of barcode or RFID chips identification of the laundry items, it is possible to pack containers. If items are not available, **replacement items can be stored for deliveries**.

### Inventories and histories

All movements per customer and item are **available in the history**. By entering inventories, the counted quantities can be set as the new actual stock at the customer. A history is also available for inventories. For each article of a customer, the exchange rate can be determined by recording a weekly exchange quantity. In connection with the storage management module, all investments made for a customer (restocking and replacement) can be viewed. **All common variants** from the calculation of actual delivery quantities to the calculation of rental flat rates or splitting prices with minimum quantities are available for invoicing.

### Advantages

- Easy inventory recording
- Complete article recording and consistent article tracking
- Quick overview and high transparency thanks to clear history